

Financial Data Book (FY Mar. 2010 Semiannual)



DTS Corporation

<http://www.dts.co.jp/en/>

(1) Financial Highlights(Non-consolidated)

(Unit: JPY Million)

	FY Mar. 2007	FY Mar. 2008	FY Mar. 2009 (1st-Half)	FY Mar. 2009	FY Mar. 2010 (1st-Half)	FY Mar. 2010 (Forecast)
Net Sales	36,908	40,839	19,197	38,339	16,066	34,000
Cost of Sales	29,521	32,795	16,024	32,273	14,459	29,550
SG&A Expenses	3,251	3,326	1,674	3,337	1,509	3,200
Operating Income	4,134	4,717	1,498	2,728	97	1,250
Ordinary Income	4,249	4,939	1,716	2,987	261	1,440
Income Before Income Taxes	4,225	4,786	1,531	2,776	256	1,430
Income Taxes	1,747	1,920	563	1,213	68	560
Net Income	2,478	2,865	968	1,563	188	870
Capital Stock	6,113	6,113	6,113	6,113	6,113	-
Shareholders' Equity	27,733	29,282	29,735	29,285	29,053	-
Total Assets	34,280	35,850	35,217	34,984	33,489	-
Shareholders' Equity Per Share(Yen) *	* 2265.28	1,198.73	1,215.46	1,237.56	1,227.76	-
Dividends Per Share(Yen) *	* 60	* 45	-	35	-	35
Net Income Per Share(Yen) *	* 202.94	117.13	39.61	64.03	7.96	36.76
Equity/Total Assets	80.9%	81.7%	84.4%	83.7%	86.8%	-
ROE	9.2%	10.1%	-	5.3%	-	-
ROA	12.7%	14.1%	-	8.4%	-	-
PER	20.75	17.07	-	9.98	-	-
Dividend Payout Ratio	29.6%	29.9%	-	53.8%	-	-
DOE	2.7%	3.0%	-	2.9%	-	-
Net cash provided by(used in) operating activities	3,893	3,403	1,267	2,844	811	-
Net cash provided by(used in) investing activities	-4,695	-361	-589	-1,487	-658	-
Net cash provided by(used in) financing activities	-578	-868	-553	-1,402	-471	-
Cash and cash equivalents, end of term	4,152	6,326	6,450	6,280	5,962	-
Employees	2,470	2,497	2,606人	2,679	2,806	2,800

* The stocks are divided at the rate of two stocks a stock on October 1, 2007.

(2) Net Sales by Segment(Non-consolidated)

(Unit : JPY Million)

	FY Mar. 2007			FY Mar. 2008			FY Mar. 2009 (1st-Half)			FY Mar. 2009			FY Mar. 2010 (1st-Half)			FY Mar. 2010 (Forecast)		
	Amount	Share	YoY Change	Amount	Share	YoY Change	Amount	Share	YoY Change	Amount	Share	YoY Change	Amount	Share	YoY Change	Amount	Share	YoY Change
System Engineering Services	24,152	65.4	1.5	-	-	-	-	-	-	-	-	-	-	-	-	-	-	-
Operation Engineering Services	6,329	17.1	-12.9	-	-	-	-	-	-	-	-	-	-	-	-	-	-	-
Network Engineering Services	5,564	15.1	12.9	-	-	-	-	-	-	-	-	-	-	-	-	-	-	-
System Engineering Services *	25,508	69.1	-	28,972	70.9	13.6	12,601	65.6	-2.7	25,342	66.1	-12.5	10,419	64.9	-17.3	22,900	67.4	-9.6
Operation Engineering Services *	10,537	28.6	-	11,014	27.0	4.5	6,045	31.5	11.3	11,998	31.3	8.9	5,358	33.3	-11.4	10,400	30.6	-13.3
IT Services	36,046	97.7	0.2	39,986	97.9	10.9	18,646	97.1	1.4	37,341	97.4	-6.6	15,777	98.2	-15.4	33,300	97.9	-10.8
Product Services	861	2.3	129.1	852	2.1	-1.0	550	2.9	49.6	997	2.6	17.1	288	1.8	-47.6	700	2.1	-29.9
Net Sales	36,908	100.0	1.5	40,839	100.0	10.7	19,197	100.0	2.4	38,339	100.0	-6.1	16,066	100.0	-16.3	34,000	100.0	-11.3

* The article composition has been changed since the period on March, 2008. The numerical value before and after the change is described in parallel about the period on March, 2007.

(3) Orders by Segment(Non-consolidated)

(Unit : JPY Million)

	FY Mar. 2007			FY Mar. 2008			FY Mar. 2009 (1st-Half)			FY Mar. 2009			FY Mar. 2010 (1st-Half)			FY Mar. 2010 (Forecast)		
	Amount	Share %	YoY Change %	Amount	Share %	YoY Change %	Amount	Share %	YoY Change %	Amount	Share %	YoY Change %	Amount	Share %	YoY Change %	Amount	Share %	YoY Change %
System Engineering Services	25,487	63.9	13.5	-	-	-	-	-	-	-	-	-	-	-	-	-	-	-
Operation Engineering Services	6,053	15.2	-20.3	-	-	-	-	-	-	-	-	-	-	-	-	-	-	-
Network Engineering Services	7,465	18.7	52.3	-	-	-	-	-	-	-	-	-	-	-	-	-	-	-
System Engineering Services *	27,142	68.0	-	30,574	70.1	12.6	12,347	83.2	-13.9	23,189	65.7	-24.2	10,097	85.1	-18.2	23,500	68.1	1.3
Operation Engineering Services *	11,863	29.7	-	12,107	27.8	2.1	1,880	12.7	-2.0	11,231	31.8	-7.2	1,429	12.0	-24.0	10,300	29.9	-8.3
IT Services	39,006	97.8	11.6	42,682	97.9	9.4	14,227	95.9	-12.5	34,420	97.4	-19.4	11,527	97.1	-19.0	33,800	98.0	-1.8
Product Services	892	2.2	138.9	924	2.1	3.6	605	4.1	28.7	901	2.6	-2.4	340	2.9	-43.7	700	2.0	-22.4
Net Sales	39,898	100.0	12.9	43,606	100.0	9.3	14,833	100.0	-11.4	35,322	100.0	-19.0	11,867	100.0	-20.0	34,500	100.0	-2.3

* The article composition has been changed since the period on March, 2008. The numerical value before and after the change is described in parallel about the period on March, 2007.

(4) Orders by Segment, end of terms(Non-consolidated)

(Unit : JPY Million)

	FY Mar. 2007			FY Mar. 2008			FY Mar. 2009 (1st-Half)			FY Mar. 2009			FY Mar. 2010 (1st-Half)			FY Mar. 2010 (Forecast)		
	Amount	Share	YoY Change	Amount	Share	YoY Change	Amount	Share	YoY Change	Amount	Share	YoY Change	Amount	Share	YoY Change	Amount	Share	YoY Change
System Engineering Services	7,068	46.0	29.5	-	-	-	-	-	-	-	-	-	-	-	-	-	-	-
Operation Engineering Services	4,210	27.4	-13.2	-	-	-	-	-	-	-	-	-	-	-	-	-	-	-
Network Engineering Services	4,047	26.3	96.5	-	-	-	-	-	-	-	-	-	-	-	-	-	-	-
System Engineering Services *	7,483	48.7	-	9,085	50.1	21.4	8,831	64.1	-0.5	6,932	45.8	-23.7	6,610	60.5	-25.2	7,532	48.2	8.7
Operation Engineering Services *	7,842	51.0	-	8,935	49.2	13.9	4,771	34.6	10.2	8,168	54.0	-8.6	4,240	38.8	-11.1	8,068	51.6	-1.2
IT Services	15,325	99.6	23.9	18,021	99.3	17.6	13,602	98.7	3.0	15,101	99.8	-16.2	10,850	99.2	-20.2	15,601	99.8	3.3
Product Services	54	0.4	133.1	126	0.7	131.3	180	1.3	15.3	30	0.2	-76.2	82	0.8	-54.5	30	0.2	0.0
Net Sales	15,380	100.0	24.1	18,147	100.0	18.0	13,783	100.0	3.1	15,131	100.0	-16.6	10,932	100.0	-20.7	15,631	100.0	3.3

* The article composition has been changed since the period on March, 2008. The numerical value before and after the change is described in parallel about the period on March, 2007.

(5) Net Sales by Sector(Non-consolidated)

(Unit : JPY Million)

	FY Mar. 2007			FY Mar. 2008			FY Mar. 2009 (1st-Half)			FY Mar. 2009			FY Mar. 2010 (1st-Half)		
	Amount	Share %	YoY Change %	Amount	Share %	YoY Change %	Amount	Share %	YoY Change %	Amount	Share %	YoY Change %	Amount	Share %	YoY Change %
Finance	12,120	32.8	-3.6	-	-	-	-	-	-	-	-	-	-	-	-
Communications	10,108	27.4	7.6	-	-	-	-	-	-	-	-	-	-	-	-
Public	2,257	6.1	-1.2	-	-	-	-	-	-	-	-	-	-	-	-
Services	7,821	21.2	-7.8	-	-	-	-	-	-	-	-	-	-	-	-
Other	3,738	10.1	14.9	-	-	-	-	-	-	-	-	-	-	-	-
Finance *	12,577	34.1	-	14,546	35.6	15.7	6,693	34.9	0.1	13,136	34.3	-9.7	5,365	33.4	-19.8
Communications *	10,103	27.4	-	10,479	25.7	3.7	4,945	25.8	4.5	9,785	25.5	-6.6	4,398	27.4	-11.1
Public *	2,257	6.1	-	1,683	4.1	-25.4	605	3.2	-37.6	1,344	3.5	-20.2	684	4.3	13.0
Services *	7,382	20.0	-	8,760	21.5	18.7	4,190	21.8	6.6	8,160	21.3	-6.8	3,533	22.0	-15.7
Other *	3,725	10.1	-	4,516	11.1	21.2	2,213	11.5	7.3	4,915	12.8	8.8	1,798	11.2	-18.8
IT Services	36,046	97.7	0.2	39,986	97.9	10.9	18,646	97.1	1.4	37,341	97.4	-6.6	15,777	98.2	-15.4
Product Services	861	2.3	129.1	852	2.1	-1.0	550	2.9	49.6	997	2.6	17.1	288	1.8	-47.6
Net Sales	36,908	100.0	1.5	40,839	100.0	10.7	19,197	100.0	2.4	38,339	100.0	-6.1	16,066	100.0	-16.3

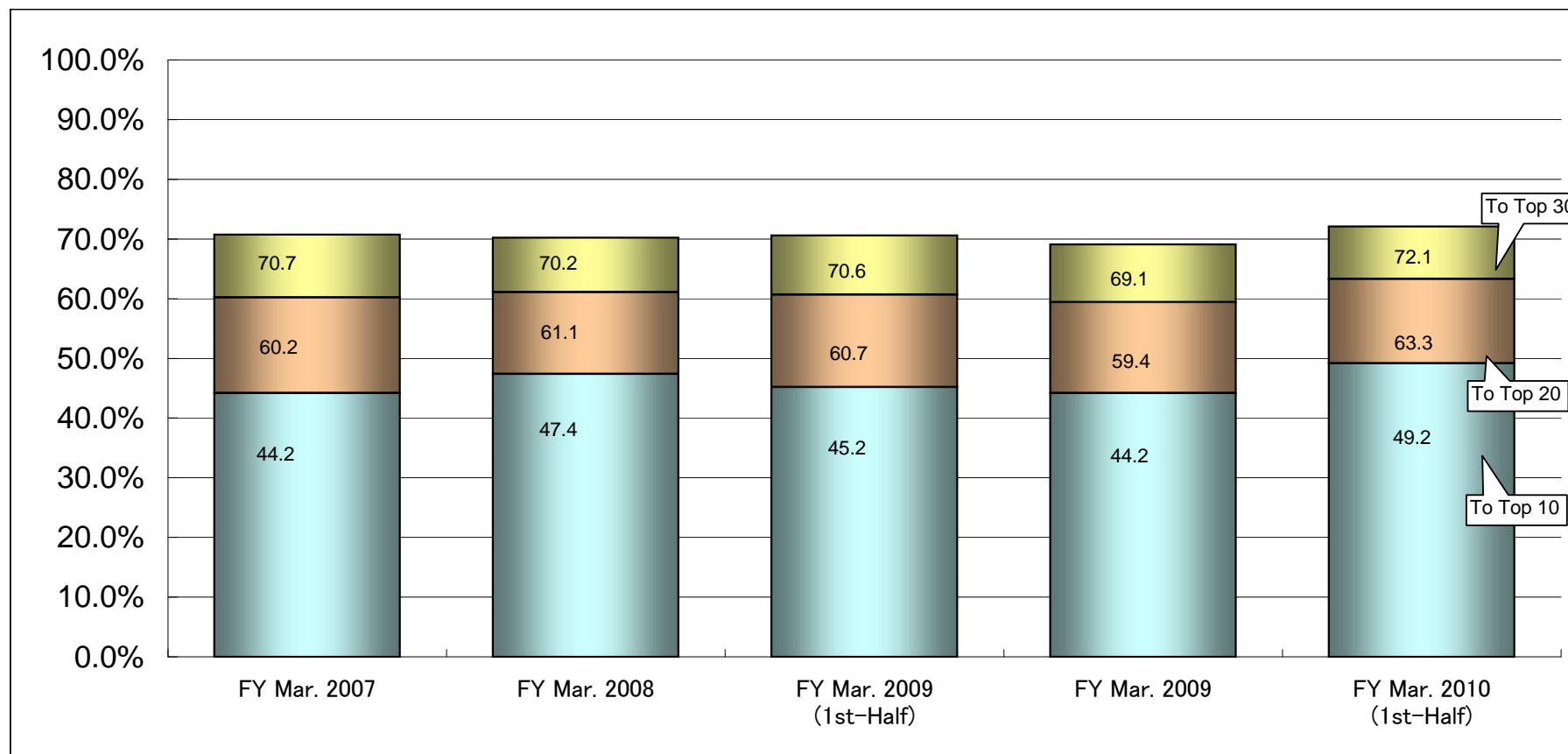
* The article composition has been changed since the period on March, 2008. The numerical value before and after the change is described in parallel about the period on March, 2007.

(6) The Major Customers(Non-consolidated)

The Major Customers Share

	FY Mar. 2007	FY Mar. 2008	FY Mar. 2009 (1st-Half)	FY Mar. 2009	FY Mar. 2010 (1st-Half)
To Top 10	44.2%	47.4%	45.2%	44.2%	49.2%
To Top 20	60.2%	61.1%	60.7%	59.4%	63.3%
To Top 30	70.7%	70.2%	70.6%	69.1%	72.1%
Number of customers	236	229	201	260	223

※IT Services only.



(7) Statement of Income(Non-consolidated)

(Unit : JPY Million)

	FY Mar. 2007			FY Mar. 2008			FY Mar. 2009 (1st-Half)			FY Mar. 2009			FY Mar. 2010 (1st-Half)		
	Amount		Ratio to Sales	Amount		Ratio to Sales	Amount		Ratio to Sales	Amount		Ratio to Sales	Amount		Ratio to Sales
			%			%			%			%			%
I Net Sales															
1. IT Services	36,046			39,986			18,646			37,341			15,777		
2. Product Services	861	36,908	100.0	852	40,839	100.0	550	19,197	100.0	997	38,339	100.0	288	16,066	100.0
II Cost of Sales															
1. IT Services	28,746			32,029			15,536			31,385			14,209		
2. Product Services	775	29,521	80.0	765	32,795	80.3	487	16,024	83.5	887	32,273	84.2	250	14,459	90.0
Gross Profit		7,386	20.0		8,044	19.7		3,173	16.5		6,066	15.8		1,606	10.0
III SG&A Expenses		3,251	8.8		3,326	8.1		1,674	8.7		3,337	8.7		1,509	9.4
Operating Income		4,134	11.2		4,717	11.6		1,498	7.8		2,728	7.1		97	0.6
IV Non-Operating Income		120	0.3		225	0.5		218	1.1		261	0.7		164	1.0
V Non-Operating Expenses		5	0.0		3	0.0		0	0.0		2	0.0		1	0.0
Ordinary Income		4,249	11.5		4,939	12.1		1,716	8.9		2,987	7.8		261	1.6
VI Extraordinary Income		36	0.1		-	-		-	-		-	-		0	0.0
VII Extraordinary Losses		61	0.2		153	0.4		184	1.0		210	0.5		5	0.0
Income Before Income Taxes		4,225	11.4		4,786	11.7		1,531	8.0		2,776	7.2		256	1.6
Income Taxes-Current	1,816			1,978			563			1,067			68		
Income Taxes-Deferred	-69	1,747	4.7	-58	1,920	4.7	-	563	2.9	146	1,213	3.2	-	68	0.4
Net Income		2,478	6.7		2,865	7.0		968	5.0		1,563	4.1		188	1.2

(8) Balance Sheet(Non-consolidated)

(Unit : JPY Million)

	At end of Mar. 2007		At end of Mar. 2008		At end of Mar. 2009 (1st-Half)		At end of Mar. 2009		At end of Mar. 2010 (1st-Half)	
	Amount	Share	Amount	Share	Amount	Share	Amount	Share	Amount	Share
(Assets)		%		%		%		%		%
I Current Assets										
1. Cash and Deposits	4,152		6,326		6,450		6,280		5,962	
2. Notes and Accounts Receivable	6,548		7,164		5,536		5,635		4,191	
3. Inventories	685		591		1,298		1,219		1,377	
4. Deferred Tax Assets	938		971		971		934		934	
5. Others	319		368		1,058		1,047		1,152	
6. Allowance for Doubtful Accounts	-0		0		-2		0		0	
Total Current Assets	12,643	36.9	15,421	43.0	15,313	43.5	15,116	43.2	13,618	40.7
II Noncurrent Assets										
1. Property, Plant and Equipment										
(1) Buildings	2,651		2,517		2,473		2,410		2,349	
(2) Machinery and Equipment	5		4		4		3		3	
(3) Furniture and Fixtures	266		230		258		210		182	
(4) Land	6,319		6,319		6,319		6,319		6,319	
Total	9,243	26.9	9,072	25.3	9,055	25.7	8,944	25.6	8,854	26.4
2. Intangible Assets										
(1) Goodwill	71		56		48		105		86	
(2) Right of Trademark	1		1		1		1		1	
(3) Software	3,267		3,167		3,142		3,027		3,182	
(4) Others	9		9		9		9		9	
Total	3,349	9.8	3,234	9.0	3,202	9.1	3,143	9.0	3,279	9.8
3. Investments and Other Assets										
(1) Investments Securities	3,212		1,929		1,495		1,506		1,559	
(2) Stocks of Subsidiaries and Affiliates	5,427		5,330		5,161		5,137		5,037	
(3) Investments in Capital of Subsidiaries and Affiliates	-		74		74		203		203	
(4) Long-Term Prepaid Expenses	31		35		36		42		28	
(5) Guaranty Money	82		157		157		165		165	
(6) Insurance Funds	195		198		367		383		400	
(7) Deferred Tax Assets	-		302		275		262		262	
(8) Others	93		93		78		78		78	
Total	9,044	26.4	8,122	22.7	7,646	21.7	7,780	22.2	7,737	23.1
Total Noncurrent Assets	21,637	63.1	20,429	57.0	19,904	56.5	19,868	56.8	19,870	59.3
Total Assets	34,280	100.0	35,850	100.0	35,217	100.0	34,984	100.0	33,489	100.0

(8) Balance Sheet(Non-consolidated)

(Unit : JPY Million)

	At end of Mar. 2007		At end of Mar. 2008		At end of Mar. 2009 (1st-Half)		At end of Mar. 2009		At end of Mar. 2010 (1st-Half)	
	Amount	Share %	Amount	Share %	Amount	Share %	Amount	Share %	Amount	Share %
(Liabilities)										
I Current Liabilities										
1. Accounts Payable-Trade	1,582		1,771		1,520		1,574		1,144	
2. Accrued Amount Payable	1,148		1,005		661		656		642	
3. Accrued Expenses	218		229		215		220		210	
4. Income Taxes Payable	1,295		1,301		611		552		87	
5. Accrued Consumption Taxes	386		384		210		292		175	
6. Advances Received	15		29		83		52		85	
7. Deposits Received	163		84		86		88		94	
8. Provision for Bonuses	1,414		1,484		1,737		1,803		1,684	
9. Provision for Directors' Bonuses	48		46		21		37		17	
10. Provision for Loss on Order Received	44		25		132		163		75	
11. Others	38		40		21		42		22	
Total Current Liabilities	6,355	18.5	6,402	17.8	5,302	15.1	5,484	15.7	4,240	12.7
II Noncurrent Liabilities										
1. Deferred Tax Liabilities	28		-		-		-		-	
2. Provision for Retirement Benefits	35		58		71		78		-	
3. Provision for Directors' Retirement Benefits	127		107		108		120		-	
4. Long-term accounts payable-other	-		-		-		-		194	
5. Others	-		0		0		16		-	
Total Noncurrent Liabilities	191	0.6	166	0.5	180	0.5	215	0.6	194	0.6
Total Liabilities	6,547	19.1	6,568	18.3	5,482	15.6	5,699	16.3	4,435	13.2

(8) Balance Sheet(Non-consolidated)

(Unit : JPY Million)

	At end of Mar. 2007		At end of Mar. 2008		At end of Mar. 2009 (1st-Half)		At end of Mar. 2009		At end of Mar. 2010 (1st-Half)	
	Amount	Share	Amount	Share	Amount	Share	Amount	Share	Amount	Share
(Net Assets)		%		%		%		%		%
I Shareholders' Equity										
1. Capital Stock	6,113	17.8	6,113	17.0	6,113	17.4	6,113	17.5	6,113	18.3
2. Total Capital Surplus	6,190	18.1	6,190	17.3	6,193	17.6	6,193	17.7	6,193	18.5
3. Total Retained Earnings	15,925	46.5	18,054	50.4	18,412	52.3	18,640	53.3	18,355	54.8
4. Treasury Stock	-1,043	-3.1	-1,178	-3.3	-1,124	-3.2	-1,608	-4.6	-1,608	-4.8
Total Shareholders' Equity	27,185	79.3	29,180	81.4	29,594	84.0	29,337	83.9	29,052	86.8
II Valuation and Translation Adjustments										
Valuation Difference on Available-for-Sale Securities	547	1.6	101	0.3	140	0.4	-52	-0.1	1	0.0
Total Valuation and Translation Adjustments	547	1.6	101	0.3	140	0.4	-52	-0.1	1	0.0
Total Net Assets	27,733	80.9	29,282	81.7	29,735	84.4	29,285	83.7	29,053	86.8
Total Liabilities and Net Assets	34,280	100.0	35,850	100.0	35,217	100.0	34,984	100.0	33,489	100.0

(1) Financial Highlights(Consolidated)

(Unit : JPY Million)

	FY Mar. 2007	FY Mar. 2008	FY Mar. 2009 (1st-Half)	FY Mar. 2009	FY Mar. 2010 (1st-Half)	FY Mar. 2010 (Forecast)
Net Sales	51,969	61,801	29,811	59,995	25,269	51,800
Cost of Sales	42,290	50,105	24,890	50,327	22,445	44,500
SG&A Expenses	4,924	6,097	3,132	6,186	2,749	5,800
Operating Income	4,754	5,598	1,787	3,482	74	1,500
Ordinary Income	4,784	5,634	1,879	3,587	177	1,670
Income Before Taxes and Other Adjustments	4,905	5,652	1,746	3,451	-66	1,395
Income Taxes	2,192	2,527	829	1,762	162	835
Minority interests in Net Income	147	183	72	175	35	90
Net Income	2,565	2,941	844	1,513	-264	470
Shareholders' Equity	28,826	30,906	31,246	30,965	30,264	-
Total Assets	41,713	43,033	40,791	40,515	37,836	-
Shareholders' Equity Per Share(Yen) *	* 2,294.95	1,216.52	1,228.09	1,253.58	1,224.74	-
Net Income Per Share(Yen) *	* 210.09	120.22	34.54	62.02	-11.17	19.86
Equity/Total Assets	67.4%	69.1%	73.7%	73.2%	76.6%	-
ROE	9.4%	10.2%	-	5.1%	-	-
ROA	12.5%	13.3%	-	8.6%	-	-
Net cash provided by(used in) operating activities	4,468	4,782	880	3,056	630	-
Net cash provided by(used in) investing activities	-2,524	-230	-9	-773	-794	-
Net cash provided by(used in) financing activities	-1,110	-1,245	-1,749	-2,784	-697	-
Cash and cash equivalents, end of term	7,935	11,242	10,363	10,740	9,878	-
Employees	3,975	4,170	4,389	4,329	4,541	4,505

* The stocks are divided at the rate of two stocks a stock on October 1, 2007.

(2) Net Sales by Segment(Consolidated)

(Unit : JPY Million)

	FY Mar. 2007			FY Mar. 2008			FY Mar. 2009 (1st-Half)			FY Mar. 2009			FY Mar. 2010 (1st-Half)			FY Mar. 2010 (Forecast)		
	Amount	Share %	YoY Change %	Amount	Share %	YoY Change %	Amount	Share %	YoY Change %	Amount	Share %	YoY Change %	Amount	Share %	YoY Change %	Amount	Share %	YoY Change %
System Engineering Services	33,840	65.1	30.3	-	-	-	-	-	-	-	-	-	-	-	-	-	-	-
Operation Engineering Services	7,203	13.9	-10.5	-	-	-	-	-	-	-	-	-	-	-	-	-	-	-
Network Engineering Services	5,675	10.9	12.8	-	-	-	-	-	-	-	-	-	-	-	-	-	-	-
System Engineering Services *	35,197	67.7	-	44,121	71.4	25.4	20,141	67.6	-1.1	40,786	68.0	-7.6	16,263	64.4	-19.3	35,000	67.6	-14.2
Operation Engineering Services *	11,522	22.2	-	11,957	19.3	3.8	6,416	21.5	7.6	12,713	21.2	6.3	5,783	22.9	-9.9	11,100	21.4	-12.7
IT Services	46,719	89.9	19.6	56,078	90.7	20.0	26,557	89.1	0.9	53,500	89.2	-4.6	22,047	87.2	-17.0	46,100	89.0	-13.8
Product Services	1,015	2.0	115.3	958	1.6	-5.6	610	2.0	40.2	1,117	1.9	16.5	614	2.4	0.7	1,000	1.9	-10.5
Stuffing Services	4,233	8.1	23.8	4,752	7.7	12.3	2,634	8.8	18.9	5,359	8.9	12.8	2,602	10.3	-1.2	4,680	9.0	-12.7
Education *	-	-	-	10	0.0	-	8	0.0	113.8	19	0.0	80.1	5	0.0	-34.4	20	0.0	3.2
Other Services	5,249	10.1	34.9	5,722	9.3	9.0	3,253	10.9	22.6	6,495	10.8	13.5	3,222	12.8	-0.9	5,700	11.0	-12.2
Net Sales	51,969	100.0	21.0	61,801	100.0	18.9	29,811	100.0	2.9	59,995	100.0	-2.9	25,269	100.0	-15.2	51,800	100.0	-13.7

* The article composition has been changed since the period on March, 2008. The numerical value before and after the change is described in parallel about the period on March, 2007.

(3) Orders by Segment(Consolidated)

(Unit : JPY Million)

	FY Mar. 2007			FY Mar. 2008			FY Mar. 2009 (1st-Half)			FY Mar. 2009			FY Mar. 2010 (1st-Half)			FY Mar. 2010 (Forecast)		
	Amount	Share %	YoY Change %	Amount	Share %	YoY Change %	Amount	Share %	YoY Change %	Amount	Share %	YoY Change %	Amount	Share %	YoY Change %	Amount	Share %	YoY Change %
System Engineering Services	37,864	64.6	42.7	-	-	-	-	-	-	-	-	-	-	-	-	-	-	-
Operation Engineering Services	6,943	11.8	-18.9	-	-	-	-	-	-	-	-	-	-	-	-	-	-	-
Network Engineering Services	7,558	12.9	50.9	-	-	-	-	-	-	-	-	-	-	-	-	-	-	-
System Engineering Services *	39,249	67.0	-	43,727	70.1	11.4	19,677	78.8	-4.4	38,591	68.5	-11.7	15,152	76.7	-23.0	35,400	67.3	-8.3
Operation Engineering Services *	13,117	22.4	-	12,966	20.8	-1.2	2,041	8.2	-7.5	11,923	21.2	-8.0	1,615	8.2	-20.9	11,000	20.9	-7.7
IT Services	52,366	89.3	30.6	56,694	90.9	8.3	21,719	87.0	-4.7	50,514	89.7	-10.9	16,768	84.8	-22.8	46,400	88.2	-8.1
Product Services	1,047	1.8	123.2	1,034	1.7	-1.2	660	2.6	22.9	1,015	1.8	-1.8	667	3.4	1.1	985	1.9	-3.0
Stuffing Services	5,194	8.9	51.4	4,659	7.5	-10.3	2,574	10.3	3.9	4,742	8.4	1.8	2,328	11.8	-9.6	5,200	9.9	9.6
Education *	-	-	-	12	0.0	-	11	0.0	44.6	26	0.0	113.4	1	0.0	-84.9	15	0.0	-42.9
Other Services	6,241	10.7	60.1	5,706	9.1	-8.6	3,246	13.0	7.3	5,784	10.3	1.4	2,997	15.2	-7.7	6,200	11.8	7.2
Net Sales	58,608	100.0	33.2	62,400	100.0	6.5	24,966	100.0	-3.3	56,299	100.0	-9.8	19,765	100.0	-20.8	52,600	100.0	-6.6

* The article composition has been changed since the period on March, 2008. The numerical value before and after the change is described in parallel about the period on March, 2007.

(4) Orders by Segment, end of terms(Consolidated)

(Unit : JPY Million)

	FY Mar. 2007			FY Mar. 2008			FY Mar. 2009 (1st-Half)			FY Mar. 2009			FY Mar. 2010 (1st-Half)			FY Mar. 2010 (Forecast)		
	Amount	Share %	YoY Change %	Amount	Share %	YoY Change %	Amount	Share %	YoY Change %	Amount	Share %	YoY Change %	Amount	Share %	YoY Change %	Amount	Share %	YoY Change %
System Engineering Services	12,194	52.5	54.5	-	-	-	-	-	-	-	-	-	-	-	-	-	-	-
Operation Engineering Services	4,797	20.6	-11.5	-	-	-	-	-	-	-	-	-	-	-	-	-	-	-
Network Engineering Services	4,078	17.5	93.5	-	-	-	-	-	-	-	-	-	-	-	-	-	-	-
System Engineering Services *	12,609	54.2	-	12,215	51.2	-3.1	11,752	61.8	-8.4	10,020	49.7	-18.0	8,909	60.8	-24.2	10,420	49.7	4.0
Operation Engineering Services *	8,460	36.4	-	9,469	39.7	11.9	5,094	26.8	8.3	8,679	43.1	-8.3	4,510	30.8	-11.5	8,579	40.9	-1.2
IT Services	21,069	90.6	36.6	21,685	90.9	2.9	16,846	88.7	-3.9	18,699	92.8	-13.8	13,420	91.6	-20.3	18,999	90.7	1.6
Product Services	55	0.2	135.7	131	0.6	138.1	180	1.0	15.4	29	0.1	-77.3	82	0.6	-54.5	14	0.1	-50.3
Stuffing Services	2,123	9.1	82.7	2,029	8.5	-4.4	1,970	10.4	-17.5	1,413	7.0	-30.4	1,139	7.8	-42.2	1,933	9.2	36.8
Education *	-	-	-	1	0.0	-	4	0.0	13.1	8	0.0	447.0	4	0.0	-1.5	3	0.0	-59.5
Other Services	2,178	9.4	83.7	2,162	9.1	-0.7	2,155	11.3	-15.4	1,451	7.2	-32.9	1,226	8.4	-43.1	1,951	9.3	34.4
Net Sales	23,247	100.0	40.0	23,847	100.0	2.6	19,002	100.0	-5.3	20,151	100.0	-15.5	14,647	100.0	-22.9	20,951	100.0	4.0

* The article composition has been changed since the period on March, 2008. The numerical value before and after the change is described in parallel about the period on March, 2007.

(5) Statement of Income(Consolidated)

(Unit: JPY Million)

	FY Mar. 2007		FY Mar. 2008		FY Mar. 2009 (1st-Half)		FY Mar. 2009		FY Mar. 2010 (1st-Half)	
	Amount	Ratio to Sales	Amount	Ratio to Sales	Amount	Ratio to Sales	Amount	Ratio to Sales	Amount	Ratio to Sales
I Net Sales	51,969	100.0	61,801	100.0	29,811	100.0	59,995	100.0	25,269	100.0
II Cost of Sales	42,290	81.4	50,105	81.1	24,890	83.5	50,327	83.9	22,445	88.8
Gross Profit	9,678	18.6	11,695	18.9	4,920	16.5	9,668	16.1	2,823	11.2
III SG&A Expenses	4,924	9.5	6,097	9.8	3,132	10.5	6,186	10.3	2,749	10.9
Operating Income	4,754	9.1	5,598	9.1	1,787	6.0	3,482	5.8	74	0.3
IV Non-Operating Income	148	0.3	170	0.2	106	0.4	139	0.2	111	0.4
V Non-Operating Expenses	117	0.2	135	0.2	13	0.0	34	0.1	8	0.0
Ordinary Income	4,784	9.2	5,634	9.1	1,879	6.3	3,587	6.0	177	0.7
VI Extraordinary Income	129	0.2	111	0.2	-	-	-	-	-	-
VII Extraordinary Loss	8	0.0	93	0.2	133	0.4	136	0.2	244	1.0
Income Before Income Taxes	4,905	9.4	5,652	9.1	1,746	5.9	3,451	5.8	-66	-0.3
Income Taxes-Current	2,337		2,558		831		1,598		251	
Income Taxes-Deferred	-145	4.2	-30	4.0	-2	829	2.9	163	-88	0.6
Minority interests in Income	147	0.3	183	0.3	72	0.2	175	0.3	35	0.1
Net Income	2,565	4.9	2,941	4.8	844	2.8	1,513	2.5	-264	-1.0

(6) Balance Sheet(Consolidated)

(Unit : JPY Million)

	At end of Mar. 2007		At end of Mar. 2008		At end of Mar. 2009 (1st-Half)		At end of Mar. 2009		At end of Mar. 2010 (1st-Half)	
	Amount	Share	Amount	Share	Amount	Share	Amount	Share	Amount	Share
(Assets)		%		%		%		%		%
I Current Assets										
1. Cash and Deposits	8,015		11,330		10,448		10,770		10,023	
2. Notes and Accounts Receivable-Trade	9,398		9,755		8,385		8,680		6,825	
3. Inventories	954		767		1,563		1,320		1,634	
4. Deferred Tax Assets	1,171		1,206		1,208		1,169		1,166	
5. Others	601		566		642		584		636	
6. Allowance for Doubtful Accounts	-188		-195		-198		-196		-197	
Total Current Assets	19,952	47.8	23,430	54.4	22,049	54.1	22,328	55.1	20,088	53.1
II Noncurrent Assets										
1. Property, Plant and Equipment										
(1) Buildings and Structures	2,806		2,681		2,650		2,581		2,528	
(2) Land	6,431		6,431		6,431		6,431		6,431	
(3) Others	312		294		325		265		237	
	9,550	22.9	9,407	21.9	9,408	23.1	9,278	22.9	9,198	24.3
2. Intangible Assets										
(1) Goodwill	4,474		3,668		3,151		2,741		2,337	
(2) Software	3,316		3,298		3,266		3,147		3,068	
(3) Others	23		24		23		23		22	
	7,814	18.8	6,990	16.2	6,441	15.8	5,912	14.6	5,428	14.3
3. Investments and Other Assets										
(1) Investments Securities	3,566		1,969		1,532		1,531		1,588	
(2) Deferred Tax Assets	69		342		316		289		380	
(3) Others	757		892		1,042		1,175		1,151	
	4,393	10.5	3,204	7.5	2,891	7.1	2,996	7.4	3,120	8.2
Total Noncurrent Assets	21,758	52.2	19,603	45.6	18,741	45.9	18,187	44.9	17,747	46.9
III Deferred Assets	2	0.0	-	-	-	-	-	-	-	-
Total Assets	41,713	100.0	43,033	100.0	40,791	100.0	40,515	100.0	37,836	100.0

(6) Balance Sheet(Consolidated)

(Unit : JPY Million)

	At end of Mar. 2007		At end of Mar. 2008		At end of Mar. 2009 (1st-Half)		At end of Mar. 2009		At end of Mar. 2010 (1st-Half)	
	Amount	Share	Amount	Share	Amount	Share	Amount	Share	Amount	Share
I Current Liabilities		%		%		%		%		%
1. Accounts Payable-Trade	2,215		2,212		1,969		1,998		1,349	
2. Short-Term Loans Payable	308		913		43		45		45	
3. Current Portion of Long-Term Loans Payable	1,286		433		351		344		391	
4. Accounts Payable	1,933		1,690		1,256		1,328		1,218	
5. Income Taxes Payable	1,668		1,686		898		845		288	
6. Provision for Bonuses	1,950		2,031		2,464		2,370		2,267	
7. Provision for Directors' Bonuses	66		57		27		53		24	
8. Provision for Loss on Order Received	44		25		132		163		75	
9. Allowance for Compensation for Damage	-		60		-		-		-	
10. Others	1,235		1,295		880		1,081		838	
Total Current Liabilities	10,709	25.7	10,407	24.2	8,024	19.7	8,231	20.3	6,499	17.2
II Noncurrent Liabilities										
1. Long-Term Loans Payable	1,317		819		633		453		234	
2. Deferred Tax Liabilities	35		1		-		-		0	
3. Provision for Retirement Benefits	405		461		500		472		410	
4. Provision for Directors' Retirement	360		391		373		364		229	
5. Long-term accounts payable-other	27		17		-		25		194	
6. Others	30		27		12		2		1	
Total Noncurrent Liabilities	2,177	5.2	1,719	4.0	1,519	3.7	1,318	3.3	1,071	2.8
Total Liabilities	12,887	30.9	12,127	28.2	9,544	23.4	9,550	23.6	7,571	20.0

(6) Balance Sheet(Consolidated)

(Unit : JPY Million)

	At end of Mar. 2007		At end of Mar. 2008		At end of Mar. 2009 (1st-Half)		At end of Mar. 2009		At end of Mar. 2010 (1st-Half)	
	Amount	Share	Amount	Share	Amount	Share	Amount	Share	Amount	Share
(Net Assets)		%		%		%		%		%
I Shareholders' Equity										
1. Capital Stock	6,113	14.7	6,113	14.2	6,113	15.0	6,113	15.1	6,113	16.2
2. Capital Surplus	6,190	14.8	6,190	14.4	6,193	15.2	6,193	15.3	6,193	16.4
3. Retained Earnings	16,289	39.0	18,494	43.0	18,728	45.9	19,030	47.0	18,293	48.3
4. Treasury Stock	-1,043	-2.5	-1,178	-2.8	-1,124	-2.8	-1,608	-4.0	-1,608	-4.3
Total Shareholders' Equity	27,549	66.0	29,620	68.8	29,910	73.3	29,728	73.4	28,990	76.6
II Valuation and Translation Adjustments										
Valuation Difference on Available-for-Sale Securities	546	1.3	96	0.2	133	0.3	-63	-0.2	-8	0.0
Total Valuation and Translation Adjustments	546	1.3	96	0.2	133	0.3	-63	-0.2	-8	0.0
III Minority interests	730	1.8	1,189	2.8	1,202	2.9	1,301	3.2	1,282	3.4
Total Net Assets	28,826	69.1	30,906	71.8	31,246	76.6	30,965	76.4	30,264	80.0
Total Liabilities and Net Assets	41,713	100.0	43,033	100.0	40,791	100.0	40,515	100.0	37,836	100.0